



N

**SOLID BOX**

SOLID BOX

SIMPLE & SAFE

# STRUMIN

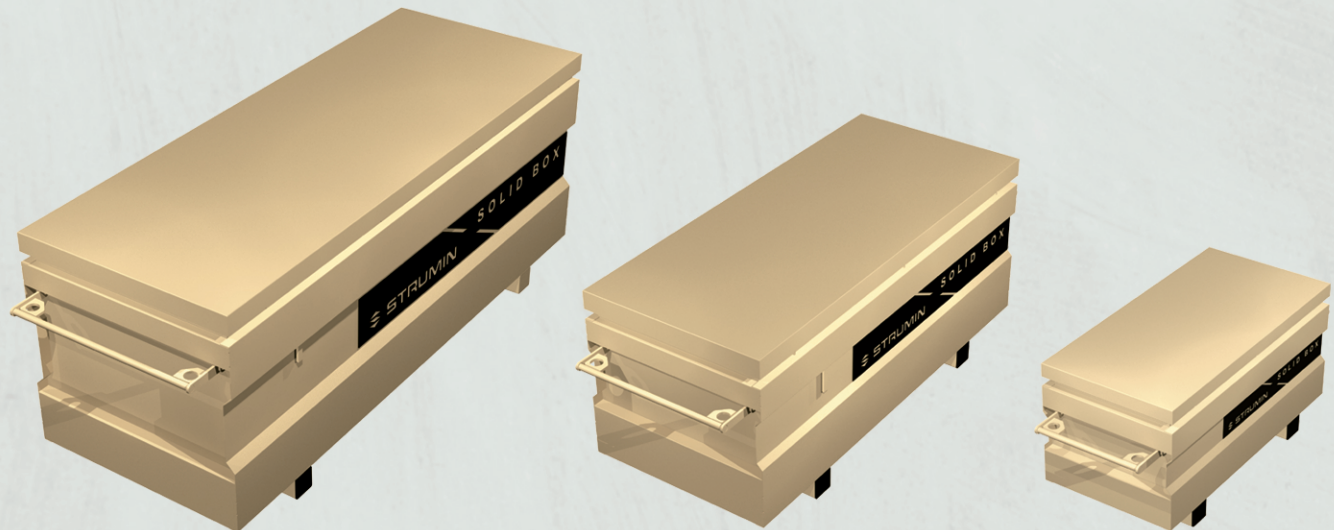


PPHU STRUMIN  
32-084 MORAWICA 191  
tel.: +48 571 870 100  
centrala@strumin.pl





## Technical specification of SOLID BOX

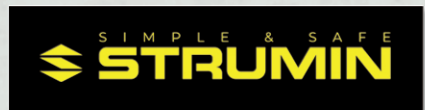


LARGE BOX

MEDIUM BOX

SMALL BOX

NAME	CAT. NO.	L [cm]	S [cm]	H [cm]	COLOR	WEIGHT [kg]
LARGE BOX	551	200	75	82	SAND	110
MEDIUM BOX	552	150	65	68	↓	70
SMALL BOX	553	100	50	55		45
LARGE BOX	554	200	75	82	ARMY GREEN	110
MEDIUM BOX	555	150	65	68	↓	70
SMALL BOX	556	100	50	55		45



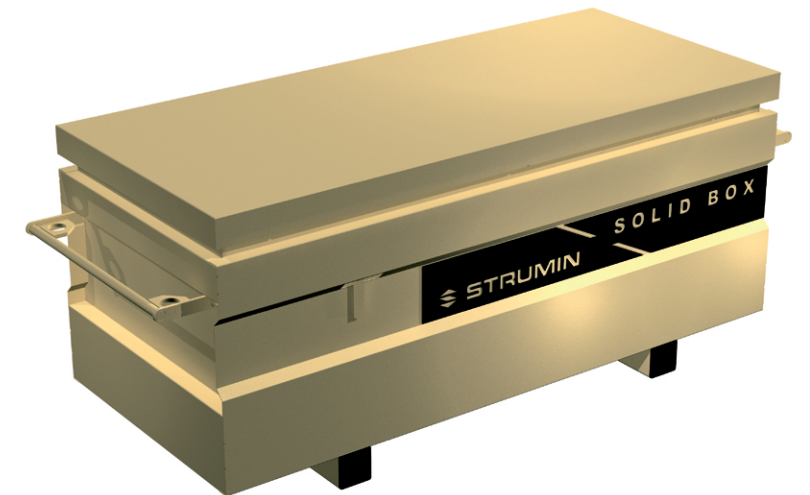
32-084 MORAWICA 191  
tel.: +48 571 870 100  
centrala@strumin.pl

## SOLID BOX

### information



SOLID BOX is used to safely store and transport tools. Its design connects functionality, mobility and ease of transport with a crane, a pallet truck or a forklift truck. Anti-theft construction of the box is supported by a range of safeguarding measures. Thanks to its versatility, it can be used both at small and big construction sites.



The SOLID BOX is made of powder-coated steel. It is available in three sizes and two colour versions.

### advantages



- safety of tools
- ease of transport
- mobility
- big capacity
- anti-theft
- waterproof
- certified



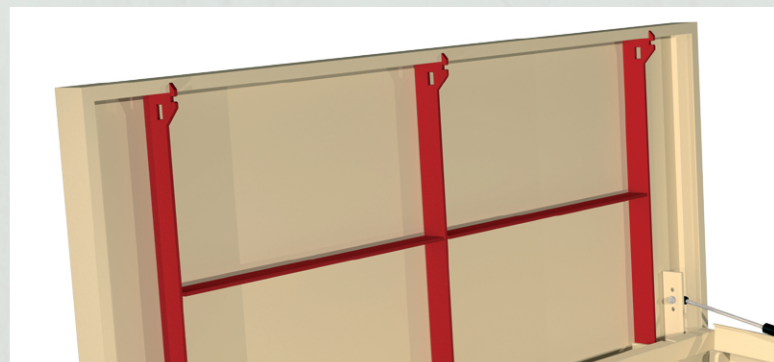
A lid is equipped with a pneumatic shock absorber which provides smooth opening and closing and protects its user's fingers from being caught.



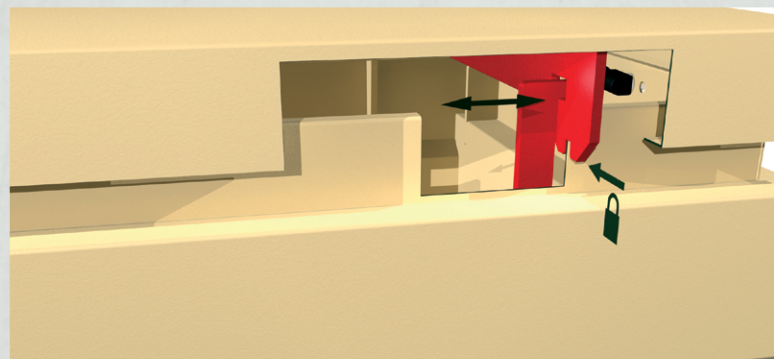
32-084 MORAWICA 191  
tel.: +48 571 870 100  
centrala@strumin.pl



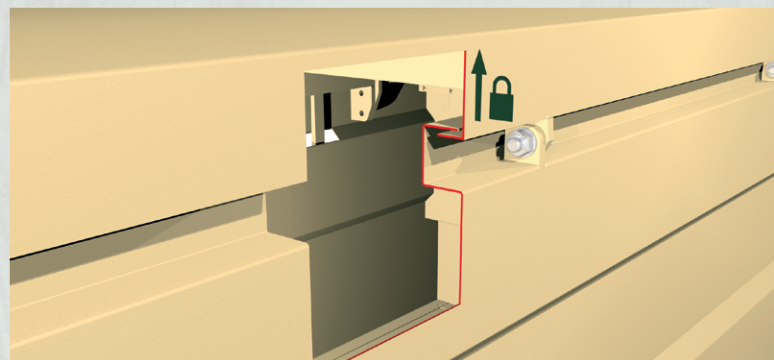
The box offers different options and functions, e.g. can be mounted to the surface with anchors.



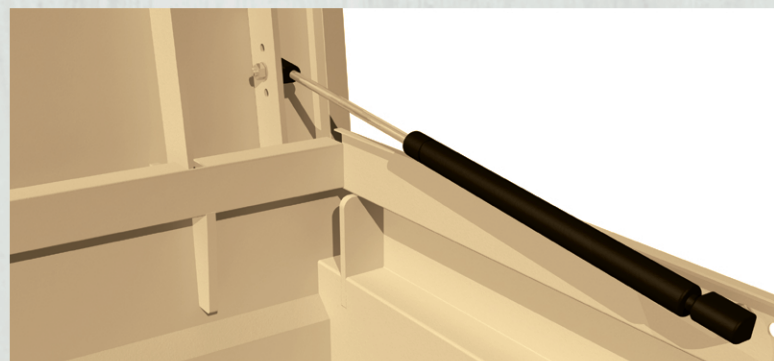
A Ribbed lid.



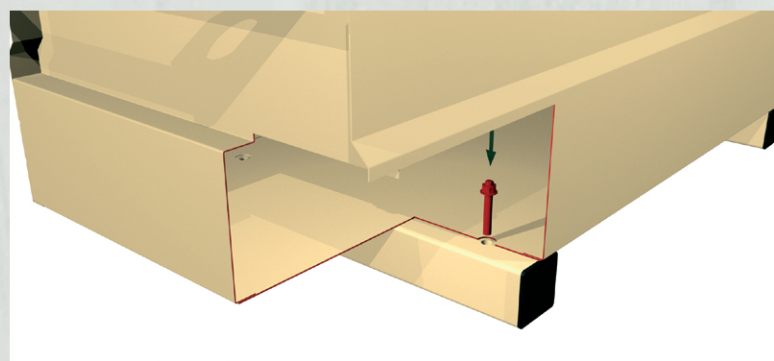
Three points closing the lid.



A collar locking the lid (in case of damaging hinges).



The Pneumatic shock absorber of the lid.



Holes that allow to attach to the surface.  
The possibility to attach wheels.

- a multi-point locking system and lid catching
- a lid equipped with a shock absorber
- suitable for transporting with a pallet truck or a crane
- waterproof
- three available sizes
- available colours: sand, army green
- possibility to attach wheels
- produced in a certified production facility
- strengthened construction
- continuous welds
- hidden lock



sand



army green

